



## Product Datasheet

**GenWay Biotech, Inc.**

6777 Nancy Ridge Drive

San Diego, CA 92121

Phone: 858.458.0866

Fax: 858.458.0833

Email: [techline@genwaybio.com](mailto:techline@genwaybio.com)

<http://www.genwaybio.com>

### Seppro® IgY-M7

**Catalog number:** IgY-M7-MB

**Product Form:** 50% bead slurry in TBS

---

#### **Product Description:**

Catalog #	Description	Observed Capacity*
IgY-M7-MB	1.2 ml IgY-M7 Microbeads	15 µl mouse serum/plasma per ml slurry per run

Affinity-purified IgY antibodies covalently conjugated through its Fc portion to 60µm polymeric microbeads.

Composite Seppro® IgY microbeads, consisting of anti-**MSA (Mouse Serum Albumin)**, anti-**IgG anti-Fibrinogen**, anti-**α1-antitrypsin**, anti-**Transferrin**, anti-**Haptoglobin** & anti-**IgM**.

\*The microbeads are reusable for 100 times under proper conditions.

#### **Antibody Produced From:**

Chicken, polyclonal. Antigen affinity-purified.

#### **Species Reactivity:**

Contact GenWay for specific information.

#### **Buffer:**

Tris-Buffered Saline (10mM Tris-HCl, 150mM NaCl, pH 7.4) with 0.02% sodium azide.

#### **Storage Instruction:**

4°C. **Do not freeze.**

#### **Recommended Application:**

Plasma or serum protein separation, immunoprecipitation.

#### **References:**

Huang L., et al. Immunoaffinity separation of plasma proteins by IgY microbeads: meeting the needs of proteomic sample preparation and analysis. *Proteomics*. 2005 Aug; 5(13):3314-28.

IgY-conjugated beads: US patent pending

---

**For research use only, not for diagnostic or therapeutic use.**



## Product Datasheet

**GenWay Biotech, Inc.**

6777 Nancy Ridge Drive

San Diego, CA 92121

Phone: 858.458.0866

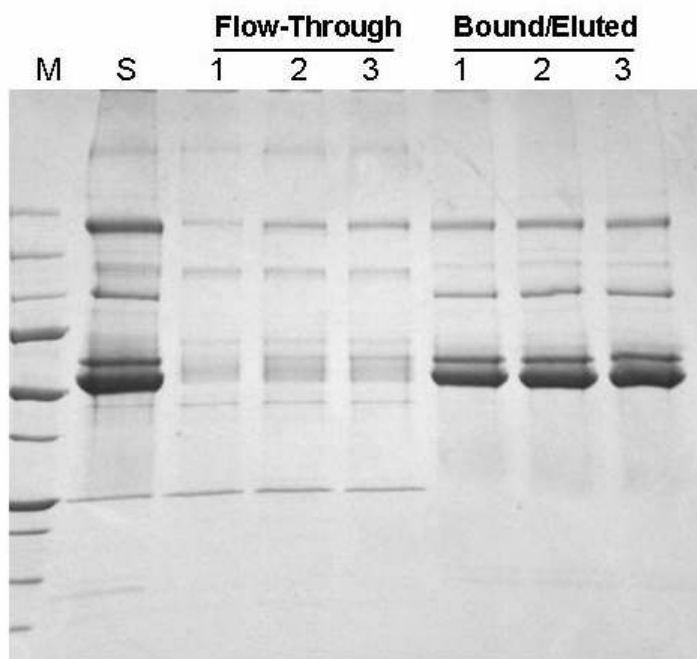
Fax: 858.458.0833

Email: [techline@genwaybio.com](mailto:techline@genwaybio.com)

<http://www.genwaybio.com>

### Affinity Separation of Seven Abundant Proteins from Mouse Plasma

GenWay's Seppro® IgY-M7 specifically removes MSA, IgG, Fibrinogen,  $\alpha$ 1-antitrypsin Transferrin, Haptoglobin and IgM from mouse plasma or serum in batch mode.



**M:** Protein MW marker

**S:** Mouse plasma from Biomeda

**1:** 200 ul mouse plasma

**2:** 225 ul Mouse plasma

**3:** 250 ul mouse plasma

**4-20% SDS PAGE under non-reducing condition with Coomassie Blue staining**

**Performed with IgY-M7 LC10 Column**