



## Product Datasheet

**GenWay Biotech, Inc.**  
6777 Nancy Ridge Drive  
San Diego, CA 92121  
Phone: 858.458.0866  
Fax: 858.458.0833  
Email: [techline@genwaybio.com](mailto:techline@genwaybio.com)  
<http://www.genwaybio.com>

# RHOBTB1 Western Blot Kit

---

**Catalog Number:** 45-003-250052

**Description:** The RHOBTB1 Western Blot Kit provides all the reagents that are required for conducting high quality western blot analysis. Conditions and protocols have been optimized for easy visualization of the RHOBTB1 protein target. Primary Target-Specific Antibody and Secondary HRP Conjugated Antibody are included to facilitate rapid detection of the target protein. The enclosed Positive Control Cell Lysate can be included in the western blot procedure in order to ensure that the antibody is functioning properly and successfully detecting the target protein. The peptide used to generate the primary antibody has also been enclosed to facilitate Peptide Blocking studies to confirm the specificity of the Primary Antibodies binding affinity.

**Species Reactivity:** Human

**Primary Antibody Details:** 50µg RHOBTB1, Rabbit Polyclone, Peptide Affinity Purified, Predict MW 77kDa.

**Antibody Titration:** 0.25µg/ml

**Secondary Antibody:** 4µg HRP Conjugated Goat Anti-Rabbit IgG(AViHRP-GAR)

**Positive Control:** 625µg Jurkat Cell Lysate

**Blocking Peptide:** 100µg RHOBTB1 Peptide

**Targeted Sequence (50AA Region Containing 14AA Immunogen):**

RHRWPPVWYLKEEDHYQRVKREREKEDIALNKHRSRRKWCFFWNSSPAVA

**Reconstitution and Storage:** Primary Antibody 50µl dd H<sub>2</sub>O, Secondary Antibody 50µl dd H<sub>2</sub>O, Cell Lysate 125µl dd H<sub>2</sub>O, Peptide 100µl dd H<sub>2</sub>O. Working stock 4°, Long Term Storage -20° Aliquoted.

**Application Data:**

---

***For research use only, not for diagnostic or therapeutic use.***



## Product Datasheet

**GenWay Biotech, Inc.**

6777 Nancy Ridge Drive

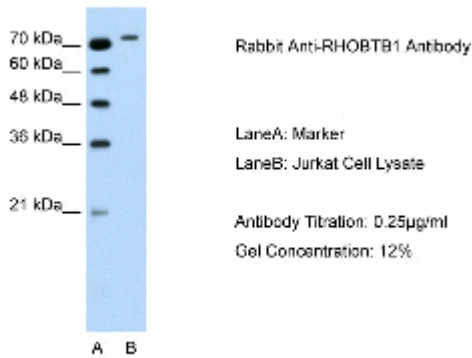
San Diego, CA 92121

Phone: 858.458.0866

Fax: 858.458.0833

Email: [techline@genwaybio.com](mailto:techline@genwaybio.com)

<http://www.genwaybio.com>



**Gel Concentration: 12%**

These products are for research and manufacturing use only and are not intended for use in humans, therapeutic or diagnostic purposes. Sales are without any seller's warranty or representation, expressed or implied, by usage or otherwise; no claims beyond replacement of unacceptable material or refund of purchase price shall be allowed. All claims must be made within 30 days following date of delivery.

***For research use only, not for diagnostic or therapeutic use.***