

# **GenWay Biotech Inc™**

## **Human BD-1 High Sensitivity ELISA Kit**

**Catalog #: GWB-ELI001**

**High Sensitivity Detection and Quantification of Low Range Human Beta-Defensin 1 (hBD-1) Concentrations in Cell Lysates, Sera and Plasma.**

**Research Purposes Only. Not Intended for Diagnostic or Clinical Procedures.**

# TABLE OF CONTENTS

PAGE

---

Introduction.....	3
Assay Principles.....	3
Assay Restrictions.....	3
Materials Included.....	4
Additional Materials Required.....	4
Health and Safety Precautions.....	4
Storage Information.....	5
Reagent Reconstitution and Preparation.....	5
Immunoassay Protocol.....	5
Cross Reactivity and Specificity.....	7
Technical Support.....	8
ELISA Plate Template.....	8
Notes.....	9

## INTRODUCTION

Human BD-1, also known as Beta-Defensin 1, is a 68 amino acid cytokine protein encoded by the *DEFB1* gene. After proteolytic cleavage of the signal sequence, the cytokine becomes 36 amino acid residues long (from 33 to 68) with a molecular weight of about 4 kDa. Generally, defensins form a family of microbicidal and cytotoxic peptides made by neutrophils. Moreover, members of the defensin family are highly similar in protein sequence. This particular gene encodes defensin, beta 1, an antimicrobial peptide implicated in the resistance of epithelial surfaces to microbial colonization. Location-wise, the gene maps in close proximity to defensin family member defensin, alpha 1, and has been implicated in the pathogenesis of cystic fibrosis.

*Source: Entrez Gene: DEFB1 defensin, beta 1 [Homo sapiens]; Swiss-Prot: P60022*

## ASSAY PRINCIPLES

The GenWay Biotech Inc™ Human BD-1 High Sensitivity ELISA Kit contains the components necessary for quantitative determination of natural or recombinant hBD-1 concentrations within any experimental sample including cell lysates, serum and plasma. This particular immunoassay utilizes the quantitative technique of a “Sandwich” Enzyme-Linked Immunosorbent Assay (ELISA) where the target protein (antigen) is bound in a “sandwich” format by the primary capture antibodies coated to each well-bottom and the secondary detection antibodies added subsequently by the investigator. The capture antibodies coated to the bottom of each well are specific for a particular epitope on the Human BD-1 cytokine while the user-added detection antibodies bind to epitopes on the captured target protein. Amid each step of the procedure, a series of wash steps must be performed to ensure the elimination of non-specific binding between proteins to other proteins or to the solid phase. After incubation and “sandwiching” of the target antigen, a peroxidase enzyme is conjugated to the constant heavy chain of the secondary antibody (either covalently or via Avidin/Streptavidin-Biotin interactions), allowing for a colorimetric reaction to ensue upon substrate addition. When the substrate TMB (3, 3', 5, 5'-Tetramethylbenzidine) is added, the reaction catalyzed by peroxidase yields a blue color that is representative of the antigen concentration. Upon sufficient color development, the reaction can be terminated through addition of Stop Solution (2 N Sulfuric Acid) where the color of the solution will turn yellow. The absorbance of each well can then be read by a spectrophotometer, allowing for generation of a standard curve and subsequent determination of protein concentration.

## ASSAY RESTRICTIONS

- This ELISA kit is intended for research purposes only, NOT diagnostic or clinical procedures of any kind.
- Materials included in this kit should NOT be used past the expiration date on the kit label.
- Reagents or substrates included in this kit should NOT be mixed or substituted with reagents or substrates from any other kits.
- Variations in pipetting technique, washing technique, operator laboratory technique, kit age, incubation time or temperature may cause differences in binding affinity of the materials provided.
- The assay is designed to eliminate interference and background by other cellular macromolecules or factors present within any biological samples. However, the possibility of background noise cannot be fully excluded until all factors have been tested using the assay kit.

## MATERIALS INCLUDED

Reagent	Quantity Per Plate	Container
96-Well Microplate or Strips Coated w/ Capture Antibody	12 x 8 Strips	-
400x Streptavidin-HRP	30 ul	Blue
Ready-to-Use Substrate	12 ml	Brown
Stop Solution	12 ml	Clear
Wash Buffer (10x)	50 ml	Clear
Assay Diluent	50 ml	Clear
Biotin-Labeled Detection Antibody	Lyophilized	Yellow
Protein Standard	Lyophilized (100 ng)	Red
Adhesive Plate Sealers	4 Sheets	-

## ADDITIONAL MATERIALS REQUIRED

The following materials and/or equipment are NOT provided in this kit but are necessary to successfully conduct the experiment:

- Microplate reader able to measure absorbance at 450 nm (with correction wavelength set to 540 nm or 570 nm)
- Micropipettes with capability of measuring volumes ranging from 1 µl to 1 ml
- Deionized or sterile water
- Squirt bottle, manifold dispenser, multichannel pipette reservoir or automated microplate washer
- Graph paper or computer software capable of generating or displaying logarithmic functions
- Absorbent paper or vacuum aspirator
- Test tubes or microfuge tubes capable of storing ≥1 ml
- Bench-top centrifuge (optional)
- Bench-top vortex (optional)
- Orbital shaker (optional)

## HEALTH AND SAFETY PRECAUTIONS

- Reagents provided in this kit may be harmful if ingested, inhaled or absorbed through the skin. Please carefully review the MSDS for each reagent before conducting the experiment.
- Stop Solution contains 2 N Sulfuric Acid (H<sub>2</sub>SO<sub>4</sub>) and is an extremely corrosive agent. Please wear proper eye, hand and face protection when handling this material. When the experiment is finished, be sure to rinse the plate with copious amounts of running water to dilute the Stop Solution prior to disposing the plate.

## STORAGE INFORMATION

**Note:** If used frequently, reagents may be stored at 2-8°C. Unopened Kits: Store at 4°C for 6 months.

Component	Storage Time	Storage
96-Well Microplate or Strips Coated w/ Capture Antibody	6 Months	4°C
Ready-to-Use Streptavidin HRP		
Ready-to-Use Substrate		
Stop Solution		
Wash Buffer (10x)		
Assay Diluent		
Biotin-Labeled Detection Antibody	Lyophilized: 6 Months Reconstituted: 1 Month	4°C
Protein Standard		
Adhesive Plate Sealers	-	-

## SAMPLE PREPARATION AND STORAGE

If samples are to be used within 24 hours, aliquot and store at 4°C. If samples are to be used over a long period of time, aliquot and store between -20°C and -80°C, depending on the duration of storage.

**Note:** Samples containing a visible precipitate or pellet must be clarified prior to use in the assay.

Caution: Avoid repeated freeze/thaw cycles to prevent loss of biological activity of proteins in experimental samples.

### ***Cell Lysate and supernatants***

Remove large cell components via centrifugation and perform the assay. Cell lysates and supernatants require a dilution using Sample Diluent. A serial dilution may be performed to determine a suitable dilution factor for the sample. For future use of the sample, follow the sample storage guidelines stated above.

### ***Serum***

Allow samples to clot in a serum separator tube (SST) for 30 minutes. After sufficient clotting, centrifuge at 1000 x g for 15 minutes and remove serum from SST in preparation for the assay. Serum samples require at least a 1:50 dilution using Sample Diluent. For future use of the sample, follow the storage guidelines above.

### ***Plasma***

Use heparin, citrate or EDTA as an anticoagulant to gather plasma from original biological sample. After collection of the plasma, centrifuge for 15 minutes at 1000 x g. This step must be performed within 30 minutes of plasma collection. Plasma samples require at least a 1:50 dilution using Sample Diluent. Afterwards, perform the assay or for future use of the sample, follow the storage guidelines stated above.

# IMMUNOASSAY PROTOCOL

**Note:** If possible, all incubation steps should be performed on an orbital shaker to equilibrate solutions when added to the microplate wells. Also, all provided solutions should be at ambient temperature prior to use.

**Note:** Avoid adding solutions into wells at an angle, always keep pipette tip perpendicular to plate bottom.

## ***Reconstitution of Provided Materials***

1. Reconstitute the Biotin-Conjugated Detection Antibody in 50  $\mu$ l of ddH<sub>2</sub>O for a concentration of 100  $\mu$ g/ml.
2. Reconstitute the Protein Standard in 100  $\mu$ l of ddH<sub>2</sub>O for a concentration of 1  $\mu$ g/ml.
3. Dilute the 50 ml of 10X Wash Buffer in 450 ml of ddH<sub>2</sub>O for 500 ml of 1X Wash Buffer.

## ***Addition of Known Standard and Unknown Sample to Immunoassay***

The Human BD-1 HS-ELISA Kit allows for the detection and quantification of endogenous levels of natural and/or recombinant Human BD-1 proteins at concentrations under 100  $\mu$ g/ml.

1. Dilute the known standard sample from 1000  $\mu$ g/ml to 0  $\mu$ g/ml in a series of microfuge tubes. Mix each tube thoroughly by inverting several times or by vortexing lightly to ensure proper equilibration. Add 100  $\mu$ l of each serial dilution step into the wells of a specified row or column of the 96-well microtiter plate in duplicate or triplicate and incubate at room temperature for 2 hours. Unknown samples of interest can be serially diluted with Sample Diluent to concentrations within the detection range of this assay kit and added to the plate at 100  $\mu$ l per well. Seal the microplate air-tight using one of the microplate adhesive seals provided in this kit or Parafilm if readily available.

## ***Application of Detection Antibody to Capture Antibody-Bound Samples***

1. Aspirate the protein standard solution out of the microplate wells. If your lab does not have a vacuum-based aspirator, you may dump the solutions from the microplate into a waste container and blot 3-4 times on a stack of paper towels until most or all of the liquid is removed from the wells. Dilute the 10X wash buffer to 1X using pure H<sub>2</sub>O. Add 300-400  $\mu$ l of Wash Buffer to each well being used and gently shake for 5-7 minutes on an orbital shaker. Perform this wash step 4 times consecutively.
2. After the 4<sup>th</sup> wash step, dilute the detection antibody solution 1:100 in detection antibody diluent to a concentration of 1  $\mu$ g/ml. Mix the test tube either by inverting several times or vortexing to ensure proper equilibration. Ensure that there is enough detection antibody solution for all wells being used. Add 100  $\mu$ l of the diluted detection antibody solution into each well, seal the plate and incubate at room temperature for 2 hours.

## ***Conjugation of Avidin-Horseradish Peroxidase Enzyme with Detection Antibody***

1. Remove the detection antibody solution out of the microplate wells by either vacuum-based aspirator or paper towel blotting. Perform 4 consecutive wash steps with gentle shaking between each wash.
2. Dilute the 400x Streptavidin-HRP by 1:400 using Assay Diluent to a 1x Streptavidin-HRP solution.
3. After the 4<sup>th</sup> wash step, add 100  $\mu$ l of 1x Streptavidin-HRP solution into each well and incubate at room temperature for 30 minutes.

## ***Application of Liquid Substrate for Colorimetric Reaction***

1. Remove the Avidin-HRP conjugate solution out of the microplate wells by either vacuum-based aspirator or paper towel blotting. Prepare the ready-to-use substrate solution by bringing it to room temperature without exposure to fluorescent or UV light as these may degrade the substrate. Perform 4 consecutive wash steps with

gentle shaking between each wash.

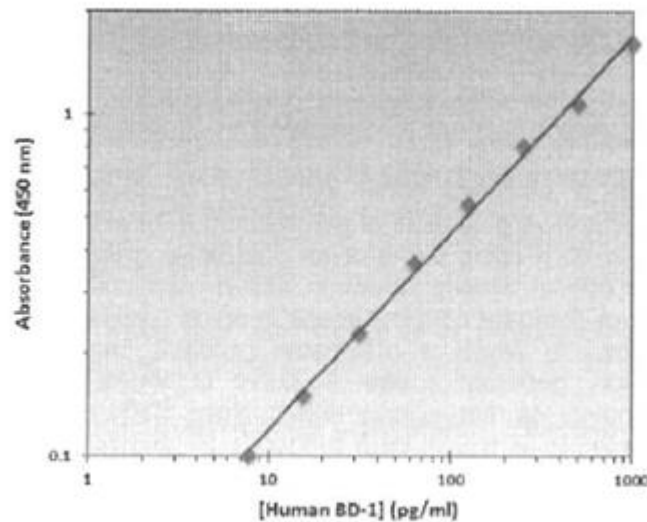
2. After the 4<sup>th</sup> wash step, add 100  $\mu$ l of ready-to-use substrate solution into each well and incubate at room temperature for color development. The microplate should be kept out of direct light by either covering with an opaque object or putting it into a dark room. Closely monitor the color development as some wells may turn blue very quickly depending on analyte and/or detection antibody-HRP concentrations. Once the blue color has ceased to develop further, immediately add 100  $\mu$ l of stop solution to each well being used. The color in the wells should immediately change from blue to yellow.
3. The microplate is now ready to be read by a microplate reader. Within 30 minutes of adding the Stop Solution, determine the optical density (absorbance) of each well by reading the plate with the microplate reader set to 450 nm. If wavelength correction is available, set to 540 nm or 570 nm. If wavelength correction is not available, subtract readings at 540 nm or 570 nm from the readings at 450 nm. **Caution:** Readings made directly at 450 nm without correction may be higher and less accurate.

### ***Generation of Standard Curve and Interpretation of Data***

1. Average the duplicate or triplicate readings for each standard, control and sample and subtract the average zero standard optical density.
2. Generate a standard curve by using Microsoft Excel or other computer software capable of establishing a 4-Parameter Logistic (4-PL) curve fit. If using Excel or an alternative graphing tool, plot the average optical density values in absorbance units (y-axis) against the known standard concentrations in pg/ml (x-axis). **Note:** Only use the values in which a noticeable gradient can be established. Afterwards, generate a best fit curve or “trend-line” through the plotted points via regression analysis. **Note:** Shown on the next page is an example of typical data produced by analysis of the standard sample.

The data and subsequent graph was obtained after performing a high-sensitivity cytokine ELISA for Human BD-1. Each known sample concentration was assayed in triplicate.

Human BD-1 High Sensitivity Standard Curve	
Concentration (pg/ml)	Average OD 450nm
1000	1.61
500	1.08
250	0.81
125	0.55
62.5	0.37
31.25	0.23
15.625	0.15
7.8125	0.01



## CROSS REACTIVITY AND SPECIFICITY

The Human BD-1 HS-ELISA is capable of recognizing both recombinant and naturally produced Human BD-1 proteins. The antigens listed below were tested at 50 ng/ml and exhibited 100% cross reactivity.

- **Human:** BD-1 (47 aa)

The antigens listed below were tested at 50 ng/ml and did not exhibit significant cross reactivity or interference.

- **Human:** BD-2, BD-3, BD-4



# TECHNICAL SUPPORT

For troubleshooting, information or assistance, please go online to [www.genwaybio.com](http://www.genwaybio.com) or contact us at:

GenWay Biotech, Inc.  
6777 Nancy Ridge Dr.  
San Diego CA, 92121  
United States of America

Email: [techline@genwaybio.com](mailto:techline@genwaybio.com)

Phone: (858)458-0866

Fax: (858)458-0833

## ELISA PLATE TEMPLATE

	<b>1</b>	<b>2</b>	<b>3</b>	<b>4</b>	<b>5</b>	<b>6</b>	<b>7</b>	<b>8</b>	<b>9</b>	<b>10</b>	<b>11</b>	<b>12</b>
<b>A</b>												
<b>B</b>												
<b>C</b>												
<b>D</b>												
<b>E</b>												
<b>F</b>												
<b>G</b>												
<b>H</b>												

## NOTES