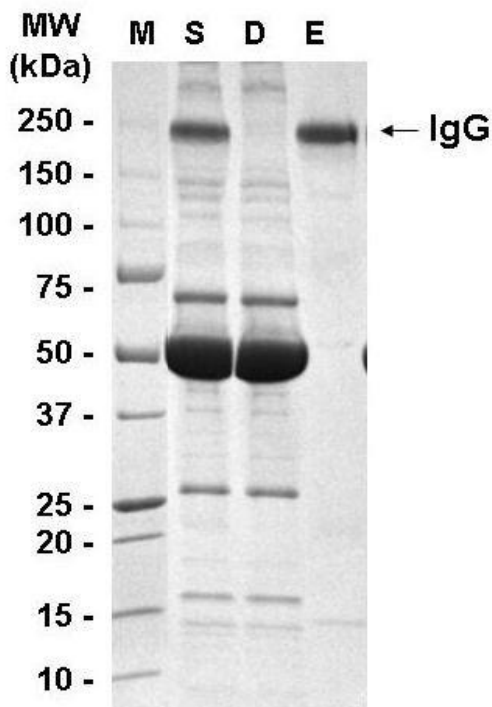


<b>Bead Name:</b>	Anti-IgG IgY Coupled Beads
<b>Lot Number:</b>	LN 131205
<hr/>	
<b>Formulation:</b>	50% bead slurry in Tris-Buffered Saline (10mM Tris-HCl, 150mM NaCl, pH 7.4) with 0.02% sodium azide
<b>Bead Volume :</b>	2 columns of 0.5 ml each
<b>Storage Instructions:</b>	4 °C, <b>DO NOT FREEZE</b>
<b>Antibody Source:</b>	Chicken polyclonal. Antigen affinity-purified

**Depletion Data:**

One IgG Depletion Column can remove >99% of IgG from 80µl of human serum. These columns can be re-used at least 20 times without a loss of binding efficiency.

Serum before and after depletion were visualized on a SDS-PAGE gel.



**Affinity separation of IgG from Human serum**

M: Molecular weight marker

S: Human serum pre-depletion

D: IgG-depleted human serum

E: Eluted bound proteins from anti-IgG Fc IgY beads.

4 – 20% gradient SDS-PAGE, non-reducing condition.