
Bead Name: Anti-BSA IgY Coupled Beads

Lot Number: LN 130620

Formulation: TBS (10 mM Tris pH 7.4, 150 mM NaCl, pH7.4) + 0.02% NaN₃

Bead Concentration: 15 mg IgY/mL bead

Bead Volume : 0.5 mL

Storage Instructions: 4 °C, **DO NOT FREEZE**

Depletion Data:

One BSA Depletion Column can remove >99% of BSA from 20µl of bovine serum. One column can be re-used at least 20 times without a loss of binding efficiency.

Diluted bovine serum samples before and after depletion were visualized on an SDS-PAGE gel.

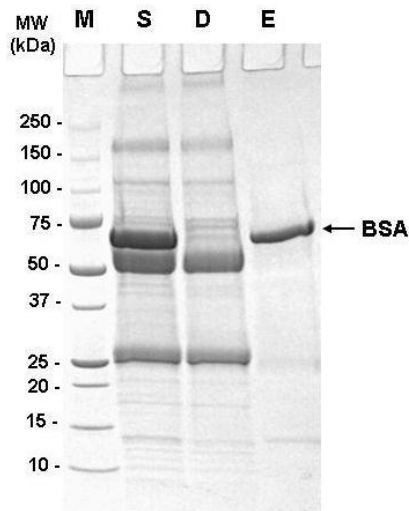


Figure1. Affinity Separation of BSA from Bovine Serum

M: MW marker

S: 1:20 dilution bovine serum before depletion

D: S after depletion with anti-BSA IgY beads

E: Eluted bound proteins from anti-BSA IgY beads

4-20% SDS gel. Coomassie blue staining.