

---

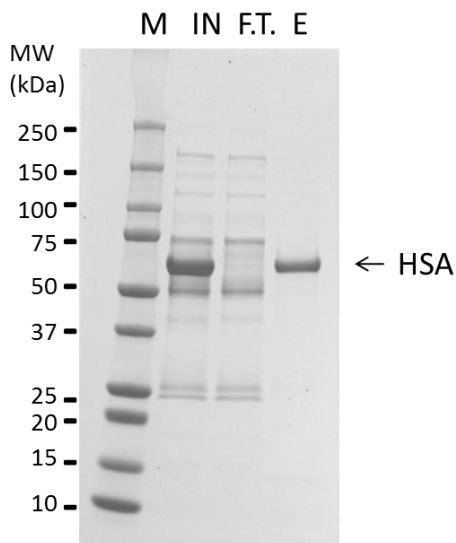
<b>Bead Name:</b>	Anti-HSA IgY Coupled Beads
<b>Lot Number:</b>	LN 130619
<hr/>	
<b>Formulation:</b>	TBS (10 mM Tris pH 7.4, 150 mM NaCl, pH7.4) + 0.02% NaN <sub>3</sub>
<b>Bead Concentration:</b>	15 mg IgY/mL bead
<b>Bead Volume :</b>	0.5 mL
<b>Storage Instructions:</b>	4 °C, <b>DO NOT FREEZE</b>

---

**Depletion Data:**

One HSA Depletion Column can remove >99% of HSA from 30 - 40µl of human serum or plasma. The column can be re-used at least 20 times without a loss of binding efficiency.

Diluted serum or plasma before and after depletion were visualized on a SDS-PAGE gel.



**M:** MW marker, **IN:** Input, **F.T:** Flow Through depleted for HSA, **E:** Elution bound proteins from anti-HSA beads  
4-20% SDS PAGE under reducing conditions.